



**Digital Precision**

Productivity. Delivered.

**MaxV-0808/1208**

DCC Video Measuring System

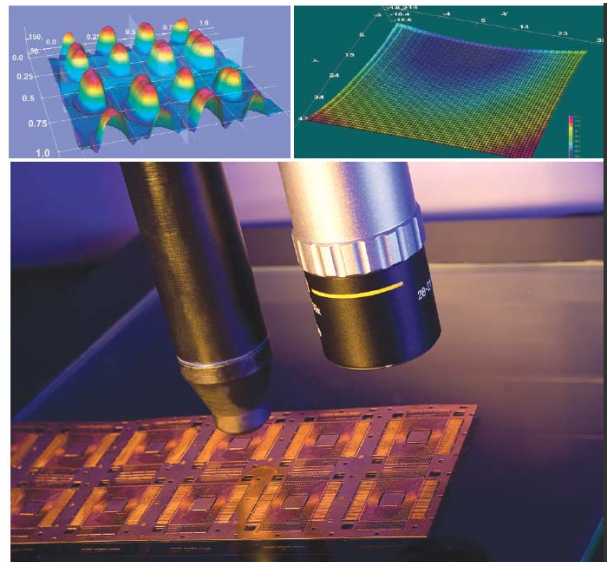


*High Precision*

*Multisensor*

*Powerful Features*

*Exceptional Value*



- *This DVCMM system delivers the best performance in its class, speed and repeatability.*
- *The ZVIEW DMP4000 software provides rich set of functions to handle applications across industries.*
- *Supports mega-pixel digital camera to achieve high image quality and superb measurement accuracy.*
- *Multi-sensor option and custom solutions are an integral part of our product offering as options available to you.*
- *Digital Precision Corp. provides the best cost-effective solutions aimed at improving your productivity and impacting your bottom-line.*

**Made in U.S.A.**

**[www.dpccorp.com](http://www.dpccorp.com)**

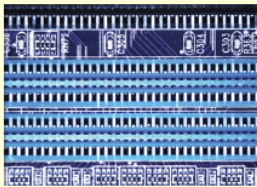
*Quality Metrology Provider Since 1998*

# MaxV-0808/1208

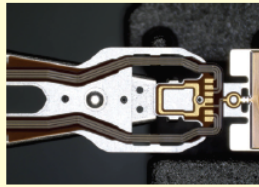
Other features include programmable lighting, motorized zoom and software to support multiple programmable steps and maintain the magnification and calibrations.

The DMP4000 software has auto edge detection with sub-pixel resolution. It provides full CMM measuring capability. The stage and video mapping capabilities greatly improve the system measurement accuracy.

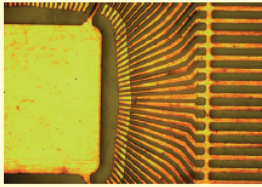
## Applications



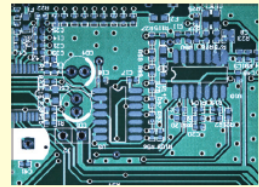
Connector



Hard Drive Head



Lead Frame



PCB

## Standard Measurement

- Distance
- Circle
- Linewidth
- Thickness
- Length
- Angle
- Ellipse
- Area
- Height
- Co-plane
- Statistics
- Counting
- Slot
- Position
- Circularity
- Concentricity
- Straightness
- Angularity
- Parallelism
- Perpendicularity
- Statistics

## Standard Configuration

### Travel:

MaxV-0808: 8(X) x 8 (Y) x 6 (Z) inch

MaxV-1208 12 (X) x 8 (Y) x 6 (Z) inch

**Resolution:** Linear scale 0.1 um (XYZ)

**Camera:** 2048 x 1536 digital camera /  
NTSC CCD camera

**Optics:** 0.58X-7X programmable zoom

**Illumination:** Programmable LED ring, LED  
co-axial, LED sub-stage and  
LED low angle project

**L, Accuracy:** XY E1 = 1.7 + 5L / 1000 um  
Z E1 = 2.5 + 5L / 1000 um

**Motion:** Microstepping stepper

**Software:** DMP-4000

**OS:** Windows 7

**Monitor:** 20 inch WLCD

### Dimension:

MaxV-0808: 18 (W) x 28 (H) x 30 (D) inch

MaxV-1208: 22 (W) x 28 (H) x 30 (D) inch

**Warranty:** One year

## Options

**Encoder:** 0.01 um

**Z Axis Travel:** 8 inch (200 mm)

**4th Axis:** Rotary table

**Height Sensor:** Up to 10nm resolution. Laser,  
white light or con-focal

**Camera:** Up to 12M digital camera

**Optics:** 2X, 5X, 10X or 20X objectives

**Illumination:** Red LED

**Touch Probe:** Renishaw TP20



15640 Graham Street  
Huntington Beach, CA 92649  
Tel: (714) 379-6188  
Fax: (714) 892-7451

[www.dpccorp.com](http://www.dpccorp.com)