



Digital Precision

Productivity. Delivered.

EZ-0804MV-XY

Manual Video Measuring System



Clear Image

Most Cost Effective

Turnkey Metrology Solution

- Digital readout (DRO) within the software
- Clear sharp images with high resolution digital camera and quality optics
- 34-200X magnification with detent zoom optics for viewing and measuring small features
- Annotation and image capture for failure analysis or part history documentation
- Data analysis directly to Excel
- Overlay features for comparison
- Dell all-in-one computer with 22 inch WLCD flat panel monitor with Windows 7
- Touch screen operation
- User friendly DMP-1500 metrology software

System Features

Travel:	200 mm x 100 mm.
Drive:	Manual .
Encoder:	0.001 mm on XY.
Camera:	3M color digital camera.
Optics:	0.7x-4.5x detent zoom lens.
Lighting:	Ring & sub-stage adj. LED
Software:	DMP-1500.
Computer:	Dual core Pentium mini-tower
Monitor:	22 inch LCD
OS:	Windows 7.
Warranty:	One year warranty

Options

Base:	Granite
Encoder:	0.0005 or 0.0001 mm resolution.
Z Encoder:	0.001 - 0.0001 mm.
Computer:	All-in-one or portable
Monitor:	22" touch screen
Camera:	CCD or digital camera.
Software:	DMP-3000.

www.dpccorp.com

Quality Metrology Provider Since 1998

15640 Graham St. Huntington Beach, CA 92649
Tel: (714) 379-6188 Fax: (714) 892-7451

Images

Source

- Frame Grabber
- FireWire
- CameraLink
- USB
- TWAIN
- File

Capture

- Image
- Image with annotation
- Screen

View

- Pixel
- Zoom In
- Zoom Out
- 1:1

Comparison

- Overlay
- Subtract

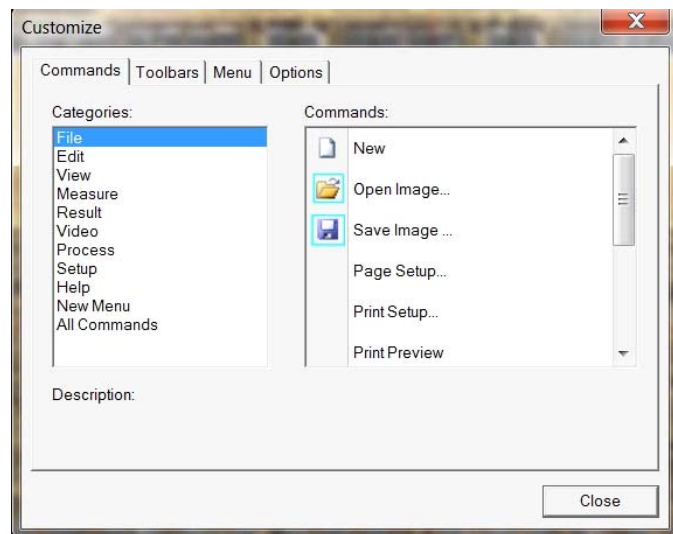
Format

- .BMP
- .JPG
- .TIF
- .PCX
- .PNG

Annotation

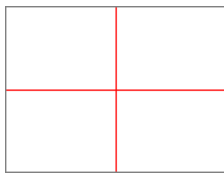


- Color
- Line Width
- Delete
- Edit
- Text
- Line
- Arrow Line
- Circle
- Filled Circle
- Rectangle
- Filled Rectangle
- Ellipse
- Filled Ellipse
- Polygon
- Filled Polygon
- Curve

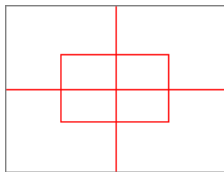


Customize Look

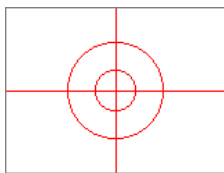
Measurement Template



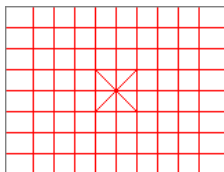
A movable crosshair



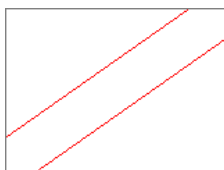
A sizable and movable rectangle with tolerance zone



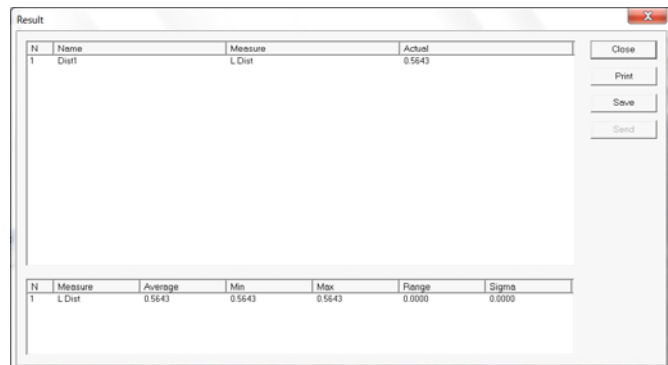
Two sizable and movable circles



A sizable and movable grid



Two sizable and rotatable lines with tolerance zone



Measurement results

Measurement

Calibration

- Two Points
- Rectangle
- Square
- Circle

Measure

- Distance
- Circle
- Angle
- Area
- Width
- Length

Results

- Formatting
- Print
- Save
- Real-time to Spreadsheet