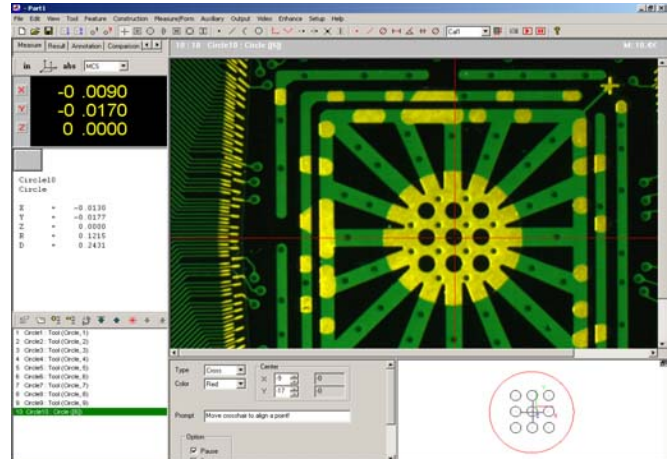
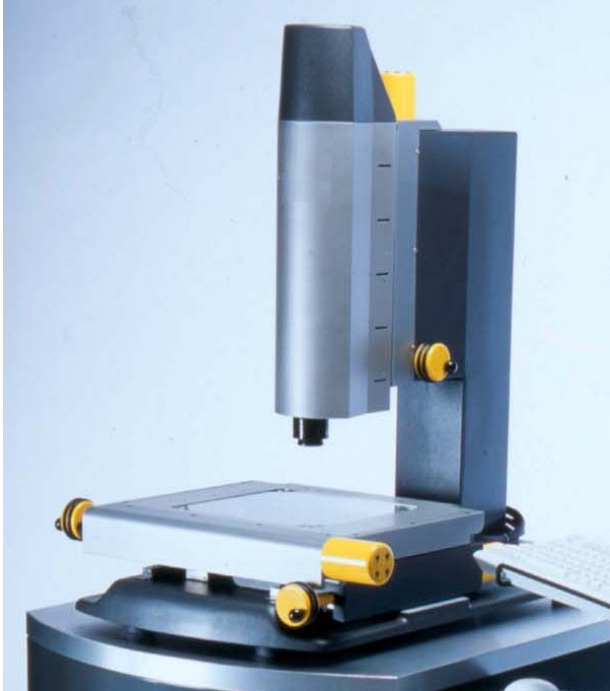




DP8 MV Manual Video Measuring System



DP8-0606MV and DP8-1206MV are 3-axis, multiple-purposes, manual video measuring systems. They provide the same level of accuracy as their DCC (Direct Computer Controlled) counterpart at much lower cost. Optional motorized Z-axis and auto-focus greatly improve the repeatability of the focus. They are suitable for low volume applications.

DMP3000 software is designed for video manual measuring system with edge detection. It provides full video CMM measuring capability and is easy-to-learn. The software also provides broad imaging functions to have a value added on the systems.

MODEL	DP8 0606MV	DP8 1206MV
X-Y PERFORMANCE		
Travel (X x Y)	150 x 150 mm	300 x 150 mm
Linear Accuracy (XY:E2)	3.5 + 8L/1000(µm)	3.5 + 8L/1000(µm)
Resolution	0.5u standard (0.2, 0.1u)	0.5u standard (0.2, 0.1u)
Repeatability	1.5u	1.5u
Z PERFORMANCE		
Travel	150 mm	
Linear Accuracy (Z:E1)	2.5 + 5L/1000	
Repeatability (Mechanical)	1.5u	1.5u
MEASURING STAGE (TABLE)		
Weight capacity	18 Kg	18 Kg
Base Material	Aluminum	Aluminum
Bearings X and Y	Lead Screw	Lead Screw
Power	110/220VAC, 10Amps, 50-60Hz	
FEATURES		
Optics	7:1 Detented Zoom	
Camera	1/3" color CCD Camera with 768x494 Pixel Array	
Back Light	150 W Halogen	
Surface Light	150 W Halogen Fiber Ring	
Computer	Pentium 4 2.8GHz, 256M, CDRW, Ethernet, 15" LCD Monitor, Windows XP	
Software	DMP3000	
Warranty	One Year	
OPTIONS		
Touch Probe	TP20 and MSP3000 Software	
Digital Camera	1280 x 1024 or Higher Resolution	
Co-axial Light	150 W Halogen or LED Ring	
Optics	Programmable Zoom and High Power Objective	

Digital Precision Corp.

5152 Bolsa Avenue, Suite 104
Huntington Beach, CA 92649

Tel: (714) 379-6188

Fax: (714) 892-7451

www.dpccorp.com

Software Features

- Stage mapping.
- Advanced edge detection for sub-pixel accurate measurement.
- CAD export.
- Easy dimensional measurement with CAD-like graphics.
- Supports inch, millimeter, mil and micron units, Cartesian and Polar coordinates.
- Datum reference frame for alignment and tolerance.
- User-defined measurement calculations and functions.
- Save, open, run and edit part program capability.
- Group editing.
- Real-time linked to other applications, such as spreadsheets, SPC and best-fit.
- Custom report.
- Flexible data format for post processing.
- Images acquisition, archiving and retrieval.
- Image annotation and comparison.

Software Features and Functions

File

- New
- Open
- Save
- Save As
- Properties
- Run
- Run Step
- Run Repeat
- Import
- Set Origin
- Export
- Recent Files
- Exit

Tool

- Find
- Teach
- Copy
- Test
- Update
- Edit
- Crosshair Tool
- Edge Tool
- Circle Tool
- Arc Tool
- Linewidth Tool
- Ellipse Tool
- Area Tool
- Cross Target
- Rectangle Target

Measure

- Edit
- Distance
- Circle
- Linewidth
- Angle
- Position
- Circularity
- Concentricity
- Straightness
- Angularity
- Parallelism
- Perpendicularity
- Size
- Statistics
- Create Result Buffer
- Add Result Buffer
- Clear Result Buffer

Video

- Live Image
- Capture
- Open Image
- Import Image
- Histogram
- Pixel
- Enlarge
- Maximize
- Reference
- Overlay
- Subtract
- Blink
- Compare
- Copy Image
- Save Image
- Print Setup
- Print Preview
- Print

Construction

- Zero
- Frame
- Offset
- Project
- Mirror
- Rotate
- Parallel
- Intersect
- Bisect
- Perpendicular
- Create Variable
- Math

Edit

- Setup
- Modify
- Insert
- Delete
- Select All
- Remove Last
- Rename
- Print
- Cancel
- Duplication
- Set Break Point
- Clear Break

Output

- Format
- DDE Link
- Save Results
- Print Results
- Send Results
- Edge Points
- Result Buffers

Feature

- Tool
- Relative Tool
- Point
- Line
- Arc
- Circle
- User Feature
- Gauge Ball
- Gauge Diameter

Auxiliary

- Comment
- Prompt
- Calibrate X
- Calibrate Y
- Set Calibration
- Camera

Setup

- System Setup
- Lock Tool X
- Lock Tool Y
- Calibration
- Change Password
- Restore Password
- Home

View

- Zoom In
- Zoom Out
- Zoom Window
- Zoom All
- Zoom View
- Show Drawing Bar
- Show Annotation
- Shift Graphics
- Rotate Graphics

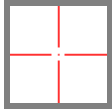
Annotation

- Color
- Line Width
- Text
- Line
- Arrow
- Circle
- Rectangle
- Ellipse
- Polygon
- Curve
- Ruler

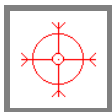
Help

- Help
- About

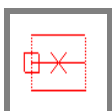
Image Tools



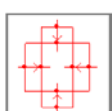
Crosshair Tool: Manual define a single point.



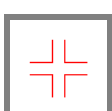
Edge Tool: Automatically find all points on an edge.



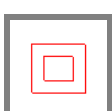
Circle Tool: Automatically find all points on a circle.



Arc Tool: Automatically find all points on a radius.



Linewidth Tool: Automatically find all points on two parallel edges.



Area Tool: Automatically find the area and centroid of an area.



Slot Tool: Automatically find all points on four sides.

Ellipse Tool: Automatically find all points on an ellipse.

Cross Target: Automatically find a cross pattern.

Circle Target: Automatically find a circle pattern.

Rectangle Target: Automatically find a rectangle pattern.

Results

Name	Actual	Nominal	+Tol	-Tol	Deviation	Out	P/F
<input checked="" type="checkbox"/> Diameter	1.1812	1.1812	0.0010	0.0010	0.0000	0.0000	PASS
<input type="checkbox"/> Radius	0.5906	0.5906	0.0010	0.0010	0.0000	0.0000	PASS
<input type="checkbox"/> Circularity	0.0192		0.0010		0.0192	0.0192	FAIL
<input type="checkbox"/> X	0.0097	0.0097	0.0010	0.0010	0.0000	0.0000	PASS
<input type="checkbox"/> Y	0.3104	0.3104	0.0010	0.0010	0.0000	0.0000	PASS
<input type="checkbox"/> Z	0.0000	0.0000	0.0010	0.0010	0.0000	0.0000	PASS

Tolerancing

Spreadsheet		General	ICAMP	FormFit
Application	Excel			Connect
Sheet	Sheet1			Disconnect
Header Cell	A1			Poke
Data Cell	A1			Browse
Data	Hello			<input type="checkbox"/> Auto Connect
Path				
Cell Mode	<input checked="" type="radio"/> Auto <input type="radio"/> Assign <input type="radio"/> Selected	Series in	<input checked="" type="radio"/> Row <input type="radio"/> Column	<input checked="" type="checkbox"/> Multiple Line <input type="checkbox"/> Append
		Column Offset	0	
		Row Offset	0	
Close		Apply	Help	

Seamless and real-time link to Excel