



DP8 AV DCC Video Measuring System

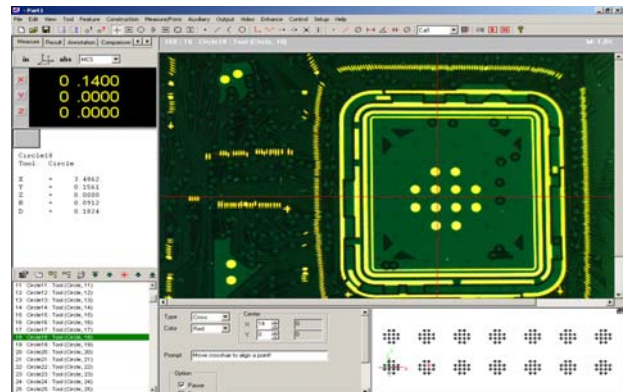


DP8-0606AV, DP8-1206AV and DP8-1412AV are motor drive (servo or stepper), direct computer controlled (DCC), video based, 3-axis measuring systems. The systems support programmable zoom and programmable LED quadrature illuminator.

The systems are equipped with high-resolution CCD camera or optional mega-pixel digital camera. The patent pending design for using digital camera brings the technology break-through to video CMM. The ultra-large image without compression and conversion greatly improves the sub-pixel accuracy and throughput.

The full-featured DMP4000 metrology software performs ultra-fast and high precision measurement on powerful PC platform running with Windows XP. It has sub-pixel auto-edge-detection, video auto-focus and part programming to enable the automatic part measurement. It is very intuitive and user friendly. The software also has easy SPC, report editor and flexible output result formats. It can be linked to other Windows applications, such as spreadsheets, SPC and best-fit packages. The CAD files, such as DXF and Gerber files, can be imported to create measuring programs directly. The measurement results can be exported to DXF files as well.

MODEL	DP8-0606AV	DP8-1206AV	DP8-1412AV
X-Y PERFORMANCE			
Travel (X x Y)	150 x 150 mm	300 x 150 mm	350 x 300 mm
Linear Accuracy (XY:E2)	1.9 + 5L/1000(µm)	1.9 + 5L/1000(µm)	1.9 + 5L/1000(µm)
Resolution	0.5u standard (0.2, 0.1u)	0.5u standard (0.2, 0.1u)	0.5u standard (0.2, 0.1u)
Repeatability	1.5u	1.5u	1.5u
Optimal Speed	50 mm / Second		
Acceleration	0-500 mm / square second		
Z PERFORMANCE			
Motor Z	Standard		
Video AF	Standard		
Linear Accuracy (Z:E1)	2.5 + 5/1000		
Optimal Speed	20 mm / second		
Acceleration	0-500 mm / square second		
Repeatability (Mechanical)	1.5u	1.5u	1.5u
MEASURING STAGE (TABLE)			
Weight capacity	18 Kg	18 Kg	18 Kg
Base Material	Aluminum	Aluminum	Aluminum
Bearings X and Y	Lead Screw	Lead Screw	Lead Screw
FEATURES			
Optics	12.5: 1 Programmable Zoom		
Camera	1/3"color CCD Camera with 768x494 Pixel Array		
Back Light	Programmable 150 W Halogen		
Surface Light	Programmable Four Quadrature LED		
Motion Controls	Microstepping Stepper. Mouse, Keyboard and Joystick		
Computer	Pentium 4 2.8GHz, 256M, CDRW, Ethernet, 17" LCD Monitor, Windows XP		
Software	DMP4000		
Warranty	One Year		
OPTIONS			
Servo Motor on XY	NO	NO	YES
Software	DMP5000		
Digital Camera	1280 x 1024 or Higher Resolution		
Co-axial Light	Programmable 150 W Halogen		
Optics	High Power Objective		
Touch Probe	TP20 Renishaw and MSP4000 Software		



Digital Precision Corp.

5152 Bolsa Avenue, Suite 104
Huntington Beach, CA 92649

Tel: (714) 379-6188

Fax: (714) 892-7451

www.dpccorp.com