



# DP6-1608AV DCC Video Measuring System



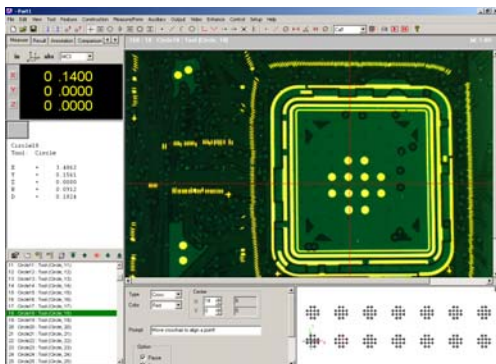
## Basic System

Travel: 16" x 8" x 4" (X, Y, Z)  
 Resolution: Glass scale 0.001mm (XYZ)  
 Camera: High resolution CCD  
 Optics: Optem 125 motorized zoom  
 Back Light: Programmable 150W  
 Top Light: Programmable 150W  
 L. Accuracy  $U1=3+L/200$  um  
 Repeatability 0.003 mm  
 Transmission Linear rolling ring Drive  
 Nut on XY. Lead Screw on Z  
 Operation 3 axes joystick control  
 motor drive.  
 XY Motion: Servo motor drive.  
 Z Motion: 51200 microstepping per  
 revolution on Z

Software: DMP-4000  
 OS: Windows XP

Computer: Pentium 4 / Athlon XP  
 Memory: 256MB  
 Monitor: 15" LCD Flat-panel

Part Height 4"  
 Part Weight 20 kgs  
 Weight 400 kgs



DP6-1608AV a motor drive, DCC (direct computer controlled) video based, 3-axis manual measuring system. The system can measure parts up to 16" length. The system equipped with either high-resolution CCD camera or mega-pixel digital camera. The patent pending design for using digital camera brings the technology break-through to video CMM. The ultra-large image without compression and conversion greatly improves the sub-pixel accuracy and throughput. The system uses motorized zoom lens. The motorized zoom and the software supports multiple programmable steps to maintain the magnifications and calibration

## Digital Precision Corp.

5152 Bolsa Avenue, Suite 104  
 Huntington Beach, CA 92649

Tel: (714) 379-6188

Fax: (714) 892-7451

www.dpccorp.com

## Options

### Digital Camera:

- 1280 x 1024 mega pixel
- Monochrome or color
- 17" LCD flat-panel monitor

# Features and Functions

## File

- New
- Open
- Save
- Save As
- Header
- Run
- Run Step
- Run Repeat
- Import
- Set Origin
- Export
- Recent Files
- Exit

## Tool

- Find
- Teach
- Copy
- Test
- Update
- Edit
- Crosshair Tool
- Edge Tool
- Circle Tool
- Arc Tool
- Linewidth Tool
- Slot Tool
- Ellipse Tool
- Area Tool
- Focus Tool
- Cross Target
- Rectangle Target
- Circle Target

## Measure

- Edit
- Distance
- Circle
- Linewidth
- Angle
- Area
- Slot
- Ellipse
- Position
- Circularity
- Concentricity
- Straightness
- Angularity
- Parallelism
- Perpendicularity
- Size
- Statistics
- User Measure
- Create Result Buffer
- Add Result Buffer

## Video

- Freeze
- Live Image
- Stored Image
- Import Image
- Draw Text
- Show Edges
- Histogram
- Enlarge
- Maximize
- Select Image
- Overlay
- Subtract
- Switch
- Compare
- Copy Image

## Construction

- Zero
- Frame
- Offset
- Project
- Mirror
- Rotate
- Parallel
- Intersect
- Bisect
- Perpendicular
- Create Variable
- Math

## Edit

- Setup
- Modify
- Insert
- Delete
- Select All
- Remove Last
- Rename
- Print
- Cancel
- Duplication
- Set Break Point

## View

- Zoom In
- Zoom Out
- Zoom Window
- Zoom All
- Zoom View
- Shift
- Rotate

## Output

- Format
- DDE Link
- Save Results
- Print Results
- Send Results
- Edge Points
- Result Buffers

## Help

- Help
- About

## Setup

- System Setup
- Lock Tool X
- Lock Tool Y
- Calibration
- Home
- Move Abs
- Move Inc
- Password
- Stage Mapping

## Feature

- Tool
- Relative Tool
- Point
- Line
- Arc
- Circle
- Define Feature
- User Feature
- Gauge Ball
- Gauge Diameter

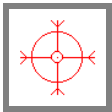
## Auxiliary

- Comment
- Prompt
- Calibrate X
- Calibrate Y
- Set Calibration
- Camera
- FormFit C.
- Send User C.
- Get User C.
- In Port
- Out Port

## Image Tools

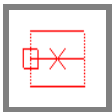


Crosshair Tool: Manual define a single point.



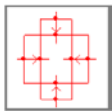
Edge Tool: Automatically find all points on an edge.

Circle Tool: Automatically find all points on a circle.



Arc Tool: Automatically find all points on a radius.

Linewidth Tool: Automatically find all points on two parallel edges.

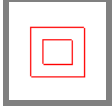


Area Tool: Automatically find the area and centroid of an area.



Slot Tool: Automatically find all points on four sides.

Ellipse Tool: Automatically find all points on an ellipse.

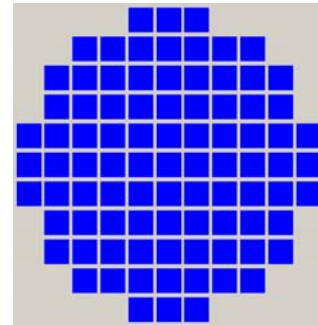


Cross Target: Automatically find a cross pattern.

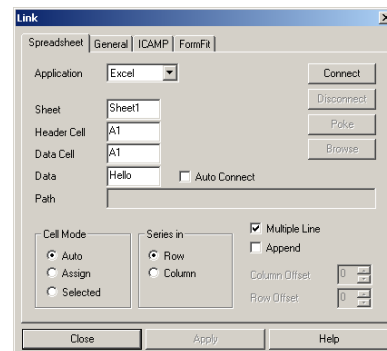
Circle Target: Automatically find a circle pattern.

Rectangle Target: Automatically find a rectangle pattern.

## Results



High Productive and Flexible Matrix Run



Seamless and real-time link to Excel