



# DP3-MV Video Measuring Microscope



DP3-MV DVCMM series offers exceptional value and ease of use in a manual video measurement and inspection system. This series offers a choices stage travel. Quick stage release and fine adjustment combination increases measurement efficiency. The stage mapping capability greatly improves the system measurement accuracy. Z-axis with encoder can be used for height measurement. The series provides the same degree of accuracy as it's DCC (Direct Computer Controlled) counterparts but at a much lower cost.

The standard configuration includes 1.3M digital camera at 1280 x 1024 resolution. Our leading digital imaging technology provides ultra-large, ultra-sharp image without compression and conversion. It greatly improves the image visualbility, sub-pixel accuracy and measurement throughput.

Optional DMP-3000 software provides complete video CMM capabilities and optional touch probe provides 3D measurement capabilities.

DVCMM is the trade mark of Digital Precision Corporation.

## Basic System

Travel: 6"(X) x 4"(Y) x 6"(Z).  
8"(X) x 4"(Y) x 6"(Z).  
12"(X) x 8"(Y) x 6"(Z).  
16"(X) x 12"(Y) x 6"(Z).

Drive: Manual Fine and Quick Release.  
Resolution: 0.001 mm on XYZ.  
Camera: Choices of 1.3M Color Digital Camera (1280x1024 resolution) or NTSC CCD Camera.  
Optics: 0.7-5X Magnification Zoom Lens.  
Top Lighting: Surface & Contour, Adj. Lighting.  
Back Lighting: Sub-Stage Adjustable LED Lighting.  
Software: DMP-1500.

Computer: High Speed Pentium 4 / Athlon.  
Monitor: 17" LCD Flat-Panel Display.  
OS: Windows XP.  
Work Station: As Shown.

## Options

### Camera

- High Resolution Digital Camera up to 6M.

### DMP-3000 Metrology Software

- Sub-Pixel Edge Detection, Part Programming.

### Touch Probe

- Renishaw TP20
- MSP3000 metrology software

### Other Available Options Include:

- Software / Hardware Customization Services, System Set-up and On-Site Training.

## Digital Precision Corporation

5152 Bolsa Avenue, Suite 104 Huntington Beach,  
CA 92649, USA

Tel: (714) 379-6188 Fax: (714) 892-7451  
www.dpccorp.com

# Images

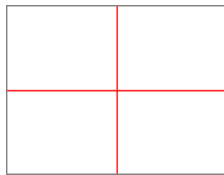
Source	Capture	View	Processing	Comparison	Format
<ul style="list-style-type: none"> <li>• Frame Grabber</li> <li>• FireWire</li> <li>• CameraLink</li> <li>• USB 2.0</li> <li>• TWAIN</li> <li>• File</li> </ul>	<ul style="list-style-type: none"> <li>• Image</li> <li>• Image with annotation</li> <li>• Screen</li> <li>• Time stamp</li> <li>• Merge</li> </ul>	<ul style="list-style-type: none"> <li>• Pixel</li> <li>• Zoom In</li> <li>• Zoom Out</li> <li>• 1:1</li> <li>• Full Screen</li> </ul>	<ul style="list-style-type: none"> <li>• Histogram</li> <li>• Grayscale</li> <li>• Color Correction</li> <li>• Filters</li> <li>• Effects</li> <li>• Sizing</li> <li>• Much more</li> </ul>	<ul style="list-style-type: none"> <li>• Overlay</li> <li>• Subtract</li> <li>• Blink</li> <li>• Compare</li> </ul>	<ul style="list-style-type: none"> <li>• .BMP</li> <li>• .JPG</li> <li>• .TIF</li> <li>• .PCX</li> <li>• .PNG</li> <li>• .PCT</li> <li>• .FPX</li> </ul>

## Annotation

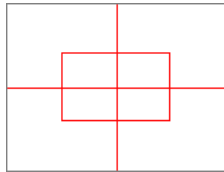


- Color
- Line Width
- Delete
- Edit
- Text
- Line
- Arrow Line
- Circle
- Filled Circle
- Rectangle
- Filled Rectangle
- Ellipse
- Filled Ellipse
- Polygon
- Filled Polygon
- Ruler

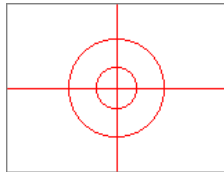
## Measurement Template



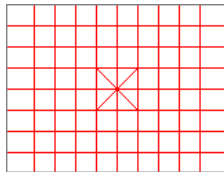
A movable crosshair



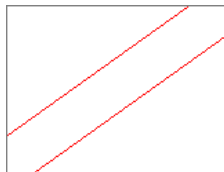
A sizable and movable rectangle with tolerance



Two sizable and movable circles



A sizable and movable grid



Two sizable and rotatable lines

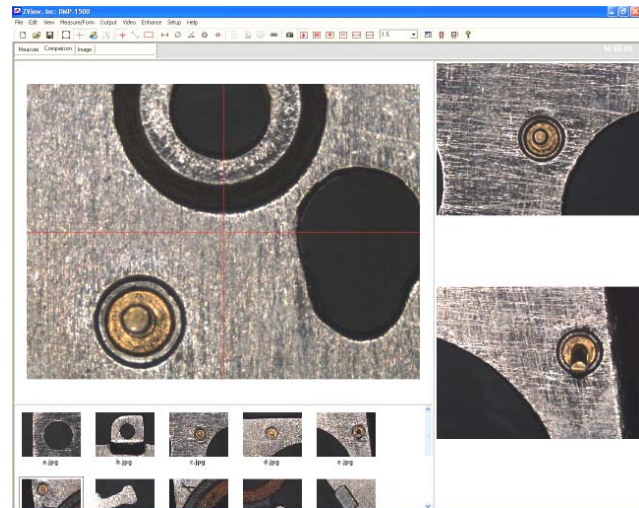


Image database and comparison

N	Name	Measure	Actual
1	Dist1	L Dist	1.7167

N	Measure	Average	Min	Max	Range	Sigma
1	L Dist	1.7167	1.7167	1.7167	0.0000	0.0000

Measurement results

## Measurement

### Calibration

- Two Points
- Rectangle
- Square
- Circle

### Measure

- Distance
- Circle
- Angle
- Area
- Width
- Length

### Results

- Formatting
- Print
- Save
- Real-time to Spreadsheet